



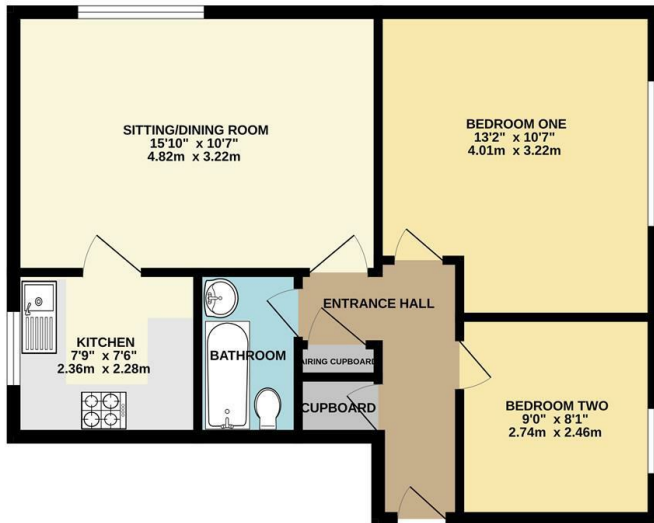
## Hale Court, Farnham GU9 0NQ

- First Floor Apartment
  - Two Bedrooms
  - Off Road Parking
  - Double Glazing
  - Council Tax Band B
- North Side of Farnham
  - One Bathroom
  - Communal Entrance
- Quiet Cul-De-Sac Location
  - EPC Rating E

Asking Price £190,000 Leasehold

Local Authority **Waverley**  
**Borough Council**  
Council Tax Band **B**  
EPC Rating **E**

FIRST FLOOR  
548 sq.ft. (50.9 sq.m.) approx.



TOTAL FLOOR AREA: 548 sq.ft. (50.9 sq.m.) approx.  
While every attempt has been made to ensure the accuracy of the floorplan contained herein, measurements of doors, windows, rooms and any other items are approximate and no responsibility is taken for any error, omission or misstatement. This plan is for illustrative purposes only and should be used as such by any prospective purchaser. The services, systems and appliances shown have not been tested and no guarantee as to their capability or efficiency can be given.  
Made with Netpicks 10/2025

**Greenwood & Co Office**  
The Wool House, Bear Lane, Farnham,  
Surrey, GU9 7LG

**Contact**  
01252734734  
info@greenwood-  
property.co.uk

Agents Note: Whilst every care has been taken to prepare these particulars, they are for guidance purposes only. All measurements are approximate and for general guidance purposes only and whilst every care has been taken to ensure accuracy, they should not be relied upon and potential buyers/tenants are advised to recheck the measurements.

